

RECEIVED
CONTRACT MANAGEMENT

West Nassau Landfill - Final Closure 2012 MAR 16 AM 11:39
Contract No. CM1734 (Bid No. NC11-004)

ALLOWANCE AUTHORIZATION
(Line Item #4)

12 MAR 20 PM 12:59
OFFICE OF CLERK OF COURTS
NASSAU COUNTY FLORIDA

Issued by: Golder Associates Inc.
To: Comanco Environmental Corporation

Allowance Authorization No.: 12

Date: 3/15/2012

Description: The following allowance is authorized:

1	Materials, labor and equipment to supply and install one Air System Isolation Valve (Lump sum cost break down is detailed in the attached back-up from Comanco)	\$	<u>2,500.00</u>
---	--	----	-----------------

Total: \$ 2,500.00 ✓

Additional Time Authorized NA Days (Additional days must be approved by written Change Order)

Beginning Allowance Amount:	\$ 600,000 00
Allowance Previously Authorized:	\$ 149,816 45
Remaining Allowance Available:	\$ 450,183 55 ✓
Amount Authorized by this Allowance:	\$ 2,500 00 ✓
Amount Remaining:	\$ 447,683 55 ✓ <i>RKH 3/16/12</i>

Issued by: *Glenn R. Carwell III* March 15, 2012
Glenn R. Carwell III, Senior Engineer and Associate Date
Golder Associates

Accepted by: *Clayton Lung* March 15, 2012
Clayton Lung, Project Manager Date
Comanco Environmental Corporation

Approved by: *Scott Herring* 3/14/12
Scott Herring, Director of Public Works Date
Nassau County, Florida

Approved by: *Charlotte Young* 3/16/12
Charlotte Young, Contracts Administrator Date
Nassau County, Florida



March 14th, 2012

Mr. Chip Carwell
Golder Associates
9428 Baymeadows Road, Suite 400
Jacksonville, FL 32256

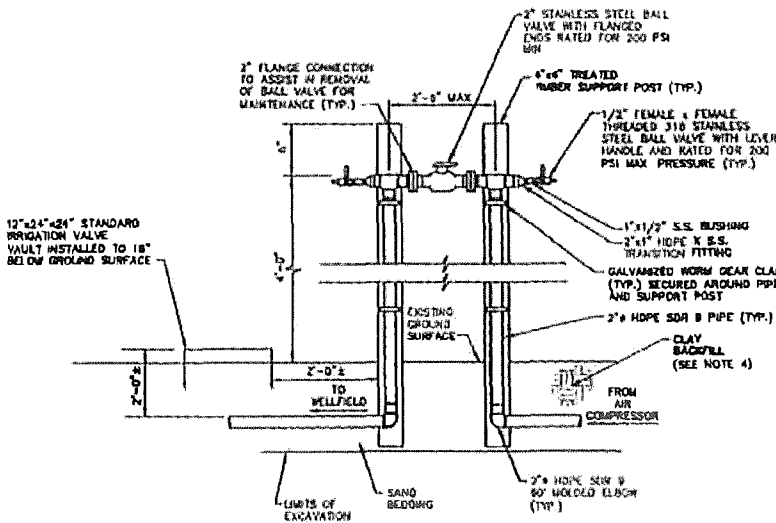
RE: WEST NASSAU LANDFILL CLOSURE I - Allowance Request #12 Air Isolation Valve

The work associated with this item consists of the supply and installation of one (1) air isolation valve as shown on the Detail 2 entitled "*Air Line Isolation and Blowoff Valves Detail*", as provided to CEC (see attached).

This work will take an estimated 14 crew hours to complete and will require the following:

MATERIAL: See attached spreadsheet and quote from HDPE, Inc.;
EQUIPMENT: one generator, one McElroy (or similar) 14 fusion machine;
LABOR: one pipe fusion technician, one laborer.

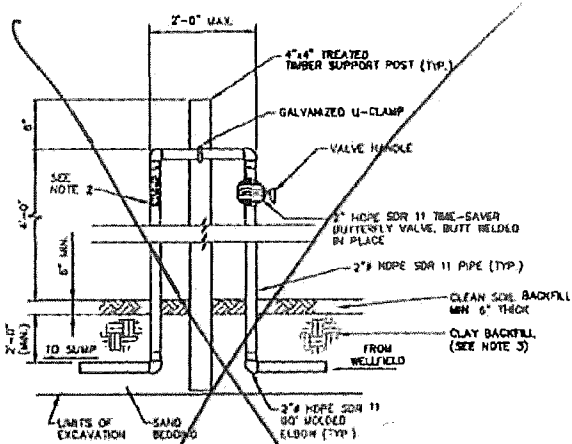
The total costs are as follows: MATERIAL - \$1,357.05, EQUIPMENT - \$480 and LABOR - \$662.95 for a total cost of **\$2,500**.



- NOTES:**
1. CONTRACTOR TO USE POSTS TO SUPPORT THE STAINLESS STEEL BALL VALVES.
 2. MARK EACH RISER WITH IDENTIFICATION NUMBER WITH YELLOW OR WHITE PAINT AND 2" TALL STENCILS OR ADHESIVE LABEL.
 3. ALL AIR SUPPLY PIPING IS TO BE 2" YELLOW-STRIPED PERFORMANCE PIPE 8400 SERIES PERIODS OR EQUIVALENT, IN ORDER TO DIFFERENTIATE IT FROM OTHER 2" PIPES USED BY THE PROJECT.
 4. CONTRACTOR SHALL BACKFILL ALL SLOPE TRENCHES WITH CLAY BACKFILL. CLAY BACKFILL SHALL BE A MINIMUM OF 2" THICK, COMPACTED TO 95% MODIFIED PROCTOR 10E-8 CLAY.

FLANGED RELEASE SEE DET. 1 1/2" IN CLM-LISC AIR SUPPLY SEE DET.

AIR LINE ISOLATION AND BLOWOFF VALVES DETAIL (2) (1/2) NOT TO SCALE



- NOTES:**
1. CONTRACTOR TO USE POSTS TO SUPPORT BUTTERFLY VALVE.
 2. MARK RISERS WITH IDENTIFICATION NUMBER WITH YELLOW OR WHITE PAINT AND 2" TALL STENCILS OR ADHESIVE LABEL.
 3. CONTRACTOR SHALL BACKFILL ALL SLOPE TRENCHES WITH CLAY BACKFILL. CLAY BACKFILL SHALL BE A MINIMUM OF 2" THICK, COMPACTED TO 95% MODIFIED PROCTOR, 10E-8 CLAY.

CONDENSATE ISOLATION VALVE DETAIL (3) (1/2) NOT TO SCALE

IN-WASTE CONDENSATE SUMP SCHEDULE

SUMP #	GROUND SURFACE ELEVATION (FT)	BOTTOM ELEVATION (FT)	DEPTH (INVERT) (FT)	HALET AVERT (ELEVATION (FT))
CS-6	135	118	17.7	120.3
CS-7	135	119	16.7	130.3
CS-8	140	124	16.7	122.3
CS-9	130	121	9.7	127.3
CS-10	137	121	16.7	127.3

18" HDPE SDR 17 SUMP OUTLET HEAD BLOWER/FLAME STA. CLAY BACK. 6" HDPE VACUUM I WELDED T.

PNEUM CLEAN EQUIP SHORT LOADS. PUMP SEE D.

EXTRUSION WELD 1" HDPE GUSSETS (3"x3") AROUND

- NOTES:**
1. 6" HDPE SDR 17 VACUUM BREAK PIPE EXTRUSION WELDED TO FLANGE IS 1'-0" OF PIPE TO PROTRUDE THROUGH TOP OF FLANGE. EXTRUSION WELD PIPE TO BOTH SIDES OF BLIND FLANGE. CENTER OF PIPE LOCATED 2" OFF CENTER OF BLIND FLANGE.
 2. THOROUGHLY COAT ENTIRE SURFACE OF BOLTS, WASHERS, NUTS AND BRACKET RINGS WITH POLYCOAT RUBBERIZED PRIMER OR EQUAL. AFTER TIGHTENING BOLTS, WRAP FLANGE IN PLASTIC WRAP PRIOR TO BACKFILLING.
 3. CONTRACTOR SHALL VERIFY CONDENSATE SUMP CONFIGURATION IN FIELD. ADJUSTMENTS SHALL BE APPROVED BY ENGINEER PRIOR TO INSTALLATION.
 4. ENGINEER SHALL APPROVE DEPTH BASED ON GROUND SURFACE ELEVATION PRIOR TO INSTALLATION.
 5. PUMP SHALL BE FITTED WITH A GED PUMP EQUALIZATION VALVE PART NUMBER 20718.

3" MIN. OFFSET FROM TOP OF SAND DRAINAGE LAYER (SEE DET. 2)

Nassau County Solid Waste Department
 West Nassau Landfill - Final Closure
 Contract No. CM1734 (Bid No. NC11-004)

Isolation Valve Cost Breakdown

Description	Quantity	Unit	Unit Price	Extended Price	Notes
12"x24"x24" Valve Vault	1	EA	\$ 398.00	\$ 398.00	
1/2"x1" SS Bushing	2	EA	\$ 4.80	\$ 9.60	
2" SDR9 HDPE Pipe - Yellow Stripe	40	LF	\$ 1.14	\$ 45.60	
2" SS Ball Valve-Flanged 200psi	1	EA	\$ 368.89	\$ 368.89	
1/2" SS Ball Valve	2	EA	\$ 23.95	\$ 47.90	
Backup Ring Ductile Iron 2"	2	EA	\$ 5.12	\$ 10.24	
Gasket 2" Neoprene	2	EA	\$ 0.59	\$ 1.18	
Bolt Pack 2" Galvanized Fig x Flg	2	EA	\$ 3.79	\$ 7.58	
2" HDPE SDR9 90 Degree Elbow	2	EA	\$ 6.00	\$ 12.00	
2" HDPE SDR9 Tee	2	EA	\$ 8.00	\$ 16.00	
Reducer HDPE SDR9 2x1"	2	EA	\$ 5.82	\$ 11.64	
Flange Adapter 2" HDPE SDR9	2	EA	\$ 9.50	\$ 19.00	
Transition Fitting 1" HDPE x SS NPT	2	EA	\$ 17.81	\$ 35.62	
4 x 4 Treated Posts	2	EA	\$ 15.00	\$ 30.00	
Freight	1	LS	\$ 100.00	\$ 100.00	
Subtotal				\$ 1,113.25	
6% Tax				\$ 66.80	
Subtotal				\$ 1,180.05	
15% Markup				\$ 177.01	
Grand Total				\$ 1,357.05	



Quotation

136 Kid Ellis Rd
Mulberry, FL 33860

Date	Estimate #
3/9/2012	3537

Phone #	863-607-4730
Fax #	863-607-6022

Name / Address
Comanco Environmental 4301 Sterling Commerce Drive Plant City, FL 33566-7372

FOB	
Shipping Point	
Offer Expires	Lead Time
4/8/2012	5 DAYS ARO

Terms	Project	Writer
Net 30		Jeff Mason

Item	Description	Qty	U/M	Cost	Total
FABRICATED	12" x 24" x 24" VALVE VAULT	1		398.00	398.00T
Miscellaneous	1/2" X 1" SS BUSHING	2	ea	4.80	9.60T
PIBK00902004..	2" X 40' IPS DR9 PE4710 F714 B/LK HDPE PIPE YELLOW STRIPE	40	ft	1.14	45.60T
Miscellaneous	2" SS 200PSI FLGD BALL VALVE	1	ea	368.89	368.89T
Miscellaneous	1/2" SS BALL VALVE	2	ea	23.95	47.90T
BRID0200160	2" IPS PC160 CONV DI BOLT RING	2	ea	5.12	10.24T
Miscellaneous	2" SDR9 FLANGE ADAPTER	2	ea	9.50	19.00T
GNEFF020018	2" X 1/8" NEOPRENE FULL FACE 150# GASKET	2	ea	0.59	1.18T
BKZS0200	2" STANDARD ZINC STUD KIT (4) 5/8" X 3.75" STUD - (8) 5/8" NUT - (8) 5/8" FLAT WASHER	2	ea	3785.71	7.57T
MTEI0200009	2" IPS DR9 PE3608/4710 MOLDED TEE	2	ea	8.00	16.00T
M90I0200009	2" IPS DR9 PE3608/4710 MOLDED 90	2	ea	6.00	12.00T
MCRI02000100..	2" X 1" IPS DR9 PE3608/4710 CONC REDUCER	2	ea	5.82	11.64T 5.82
7100100011S6	1" IPS DR11 316SS MPT TRANSITION FITTING	2	ea	17.81	35.62T
Freight Charge	FREIGHT TO JACKSONVILLE, FL	1		100.00	100.00

Subtotal	1,083.14	51,093.42
Sales Tax (6.0%)	64.99	338.65
Total	1,148.13	51,432.07